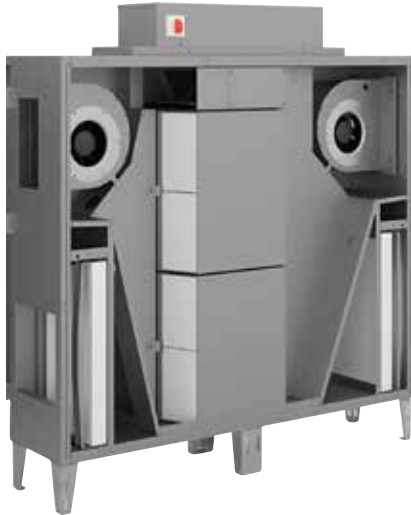


# DUPLEXbase PS 1100

DUPLEXbase PS



## PERFORMANCE

Fans		Supply Air	Extract Air
Air volume @200Pa	m³/hr / l/sec	1100 / 305	1100 / 305
Nominal voltage	V	230	230
Power input (at operation point)	kW	0.3	0.28
Max power input	kW	0.39	0.39
Max current	A	2.5	2.5
SFP	W/l/s	0.991	0.933
Fan type		EC	EC

Note: The figures above have been measured at 1100 m³/h and 200 Pa. Please use the Duplexvent Selection Software to calculate measurements at other performance levels.

The unit consist of fans equipped with the EC technology. These fans have modulating speed control throughout the marked area.

Heat Recovery		Supply Air	Extract Air
Air volume @200Pa	m³/hr / l/sec	1100 / 305	1100 / 305
Temperature at inlet	°C	-5	20
Temperature at outlet	°C	15	3.0
Humidity at inlet	% RH	90	40
Humidity at outlet	% RH	21	100
Heat recovery efficiency winter / summer	%	81 / 77	
Performance in winter / summer	kW	7.7 / 1.8	
Condensation	l/h	1.6	
Type of heat exchanger		Counterflow, Plastic	
Part No.		90001587	

Note: The figures above have been measured at 1100 m³/h and 200 Pa. Please use the Duplexvent Selection Software to calculate measurements at other performance levels.

Sound Power Level Lwa (dB)	Total	dB(A)							
		63 Hz	125 Hz	250 Hz	500 Hz	1 kHz	2 kHz	4 kHz	8 kHz
Outdoor air e1	61	41	45	49	60	51	45	31	<25
Supply air e2	82	53	63	73	78	77	74	67	66
Extract air i1	64	46	45	54	62	53	45	31	<25
Exhaust air i2	82	55	65	74	78	77	74	68	66
Breakout noise	63	39	44	53	61	54	53	50	41
Sound Pressure Level LpA (dB) measured at 3m	43	<25	<25	32	41	33	33	29	<25

Note: The figures above have been measured at 1100 m³/h and 200 Pa. Please use the Duplexvent Selection Software to calculate measurements at other performance levels.

Sound power level is calculated for simultaneous operation of both fans and measured in accordance with ISO 3744. Sound power level at connection ports is measured in accordance with ISO 5136.

## KEY FEATURES

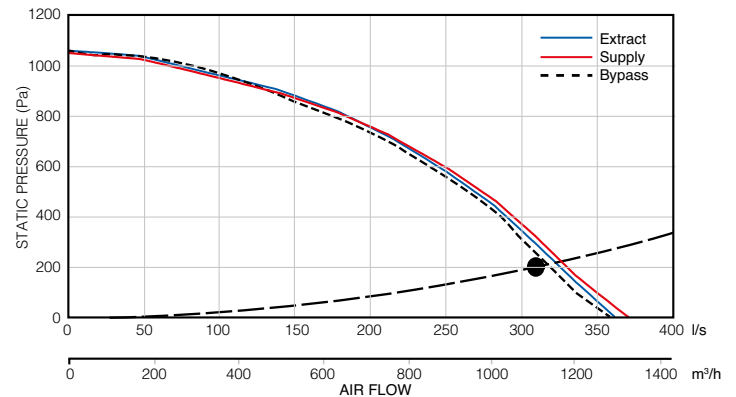
- Air volume up to 1100 m³/h (0.30 m³/s) at 200 Pa according to ErP 2018
- Excellent heat recovery efficiency up to 93%
- Compact design and high flexibility in unit orientation
- Low SFP with energy saving EC fans
- Filter access doors for easy maintenance
- Excellent thermal insulation (class T2, TB1)
- 100% adjustable digital controller with Internet and BMS connection
- BREEAM, Part L, Volume 2 and ErP 2018 compliant
- Passivhaus Institute certified
- 2 year warranty\*

## OPTIONAL FEATURES

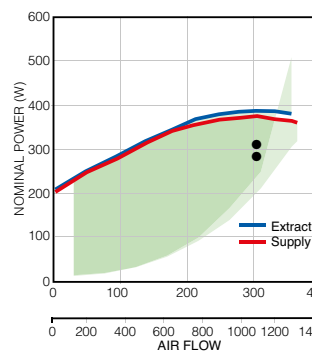
- Modulating control based on flow (constant flow function)
- Modulating control based on pressure (0-10V input)
- Pre and post-heating coils
- Cooling coils
- CO<sub>2</sub> monitors

More options available using our selection software.

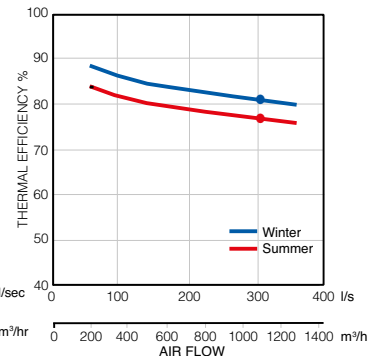
## AIR FLOW CURVE



## POWER CONSUMPTION



## HEAT RECOVERY EFFICIENCY



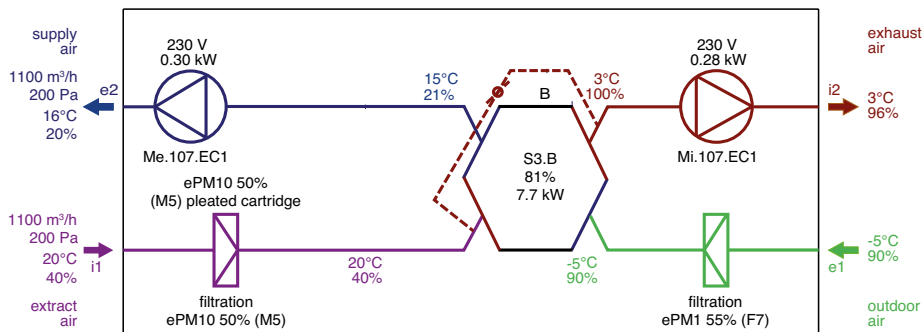
Note: Green area denotes power consumption range. Power consumption depends on system installation.

\*Excludes motors. Motor warranty one year from date of purchase.

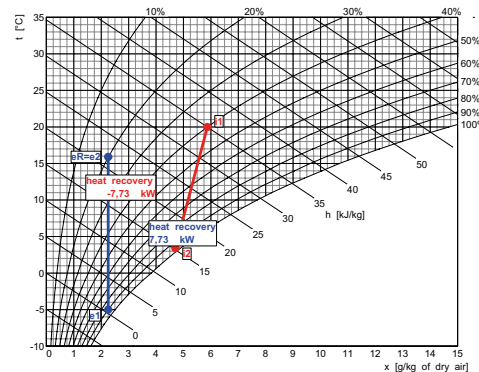


### Winter Operation:

e1 - outdoor air (ODA)      i1 - extract air (ETA)  
 e2 - supply air (SUP)      i2 - exhaust air (EHA)



Note: AHU functions diagram. Inlet and outlet location may differ from actual position and port configuration.



#### Supply

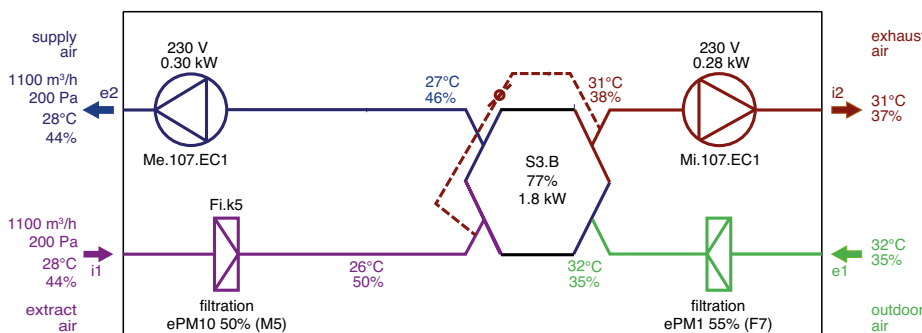
Description	t [°C]	RH [%]
e1 Outdoor Air	-5.0	90
eR Heat Recovery	15.9	20

#### Exhaust

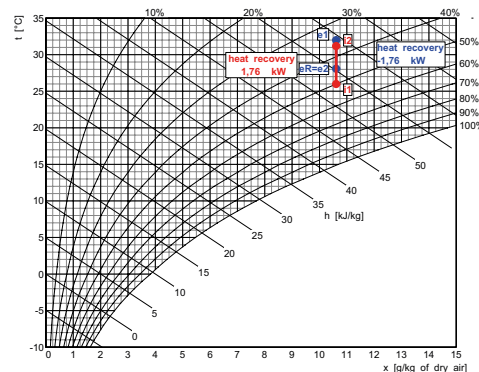
Description	t [°C]	RH [%]
i1 Extract Air	20.0	40
i2 Heat Recovery	3.4	96

### Summer Operation:

e1 - outdoor air (ODA)      i1 - extract air (ETA)  
 e2 - supply air (SUP)      i2 - exhaust air (EHA)



Note: AHU functions diagram. Inlet and outlet location may differ from actual position and port configuration.



#### Supply

Description	t [°C]	RH [%]
e1 Outdoor Air	32.0	35
eR Heat Recovery	28.1	44

#### Exhaust

Description	t [°C]	RH [%]
i1 Extract Air	26.0	50
i2 Heat Recovery	31.2	37

## FILTERS

Filtration	Supply	Extract	Accessories (part of delivery)
Type	Pleated Cartridge		Pfe dirty filter pressure switch for supply air Pfi dirty filter pressure switch for extract air
Filtration class	ePM1 55% (F7)	ePM10 50% (M5)	
Number of filters (pcs)	1	1	
Filter cartridge size (mm)	440 x 310 x 96	440 x 310 x 96	

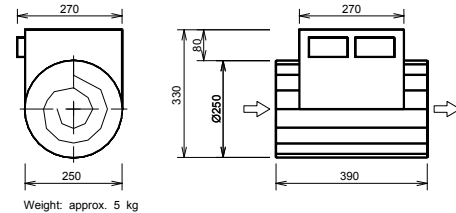
# DUPLEXbase PS 1100

DUPLEXbase PS

## OPTIONAL ACCESSORIES

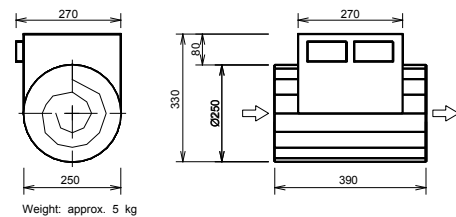
### PRE-HEATING

Built-in electric pre-heater		Supply Air
Air volume @200Pa	m <sup>3</sup> /hr / l/sec	1100 / 305
Heating capacity	kW	0
Max. heating capacity	kW	3.0
Voltage	V	230
Heating coil type		built-in
External electric pre-heater		Supply Air
Air volume @200Pa	m <sup>3</sup> /hr / l/sec	1100 / 305
Max. heating capacity	kW	3.0
Voltage	V	400
Connection ports	mm	Ø 250
Heating coil type		external



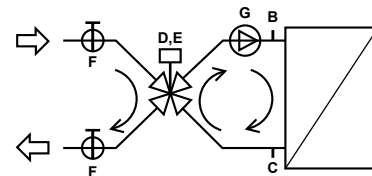
### POST HEATING

Electric post-heater		Supply Air
Air volume @200Pa	m <sup>3</sup> /hr / l/sec	1100 / 305
Temperature at inlet (upstream of heater)	°C	16
Temperature at outlet (downstream of heater)	°C	20
Heating capacity	kW	1.6
Max. heating capacity	kW	3.0
Voltage	V	400
Heating coil type		external



Water heating coil		Supply Air
Air volume @200Pa	m <sup>3</sup> /hr / l/sec	1100 / 305
Temperature at inlet (after heat recovery)	°C	16
Temperature at outlet (downstream of heater)	°C	20
Heating capacity	kW	1.5
Heating medium temperature drop	°C	70 / 50
Medium flow (from source)	l/h	66
Medium-side pressure drop in heat exchanger / in valve	kPa	26.00 / 0.28
Connection dimension (hydraulic kit)		1" female
Coil capacity	l	0.6
Heating coil type		external

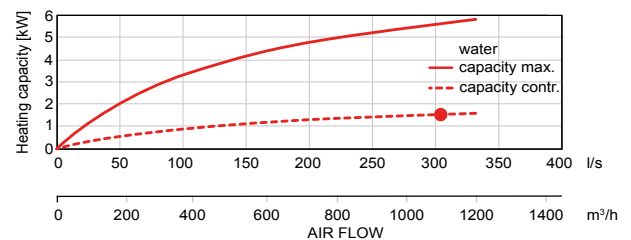
Note: The figures above have been measured at 1100 m<sup>3</sup>/h and 200 Pa. Please use the Duplexvent Selection Software to calculate measurements at other performance levels.



#### Accessories (part of delivery)

B sludge valve	plug	2)
C sludge valve	plug	2)
<b>Hydraulic kit: RE-HW4.LM24A-SR</b>		
D mixing valve	IVAR.MIX4, Kv 12, 1"	1)
E actuator	LM24A-SR	1)
F globe valve	1" female	1)
G pump	WILO YONOS PARA RS 20/6- RKC	1)

1 – delivered separately  
2 – fitted and connected



# DUPLEXbase PS 1100

DUPLEXbase PS

## OPTIONAL ACCESSORIES

### COOLING

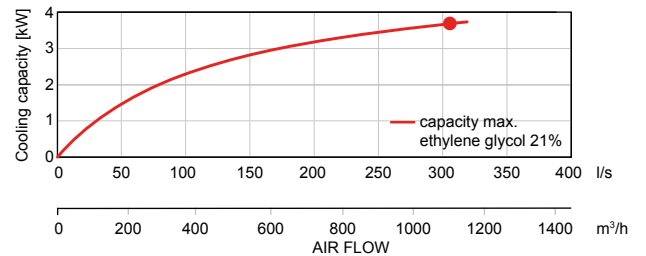
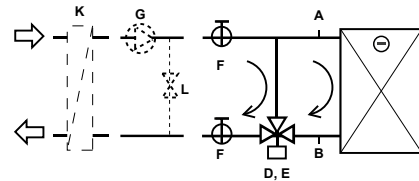
Water cooling coil		Supply Air
Air volume @200Pa	m <sup>3</sup> /hr / l/sec	1100 / 305
Temperature at inlet (after heat recovery)	°C	28
Temperature at outlet (downstream of cooling coil)	°C	19
Inlet relative humidity (after heat recovery)	% RH	44
Outlet relative humidity (downstream the cooling coil)	% RH	75
Cooling capacity	kW	3.7
Condensate production	l/h	0
Water temperature drop	°C	6 / 13
Medium flow (at max. capacity)	l/h	480
Medium-side pressure drop in heat exchanger / in valve	kPa	42.20 / 0.07
Connection dimension		1" female
Coil capacity	l	1.4
Heating coil type		external

DX cooling coil		Supply Air
Air volume @200Pa	m <sup>3</sup> /hr / l/sec	1100 / 305
Temperature at inlet (after heat recovery)	°C	28
Temperature at outlet (downstream of cooling coil)	°C	17
Inlet relative humidity (after heat recovery)	% RH	44
Outlet relative humidity (downstream the cooling coil)	% RH	77
Cooling capacity	kW	5.1
Condensate production	l/h	2.0
Refrigerant type		R32
Evaporating temperature	°C	6.0
Coil capacity	l	1.7
Heating coil type		external

Design data for condensing AHU		Supply Air
Air volume @200Pa	m <sup>3</sup> /hr / l/sec	1100 / 305
Refrigerant type		R32
Evaporating temperature	°C	6.0
Outdoor temperature	°C	32
Cooling capacity	kW	5.1
Required min. outdoor temperature	°C	10

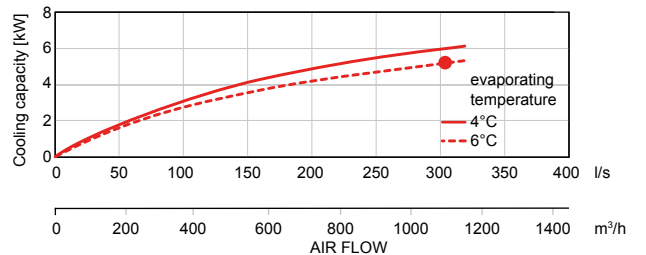
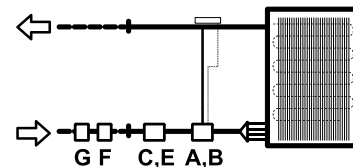
#### Accessories (part of delivery)

- A sludge valve plug 2)
  - B sludge valve plug 2)
  - Hydraulic kit: R-CW3. TR 24-SR
  - D 3-way ball valve R30BM, Kv 21, 3/4" 1)
  - E actuator TR24-SR 1)
  - F globe valve 1" female 1)
  - Others:
  - G pump 3)
  - L water bypass 3)
  - K coil water/ethylene glycol 3)
- 1 – delivered separately  
2 – fitted and connected  
3 – not part of delivery



#### Accessories (part of delivery)

- A expansion valve 3)
  - B nozzle 3)
  - C magnetic valve 3)
  - E coil 3)
  - F sight glass 3)
  - G drier 3)
- 3 – not part of delivery



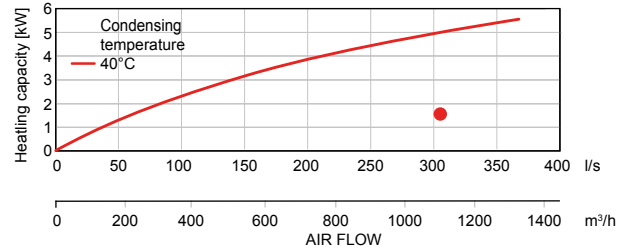
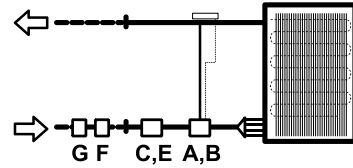
# HEAT PUMP CALCULATION

DX coil in heating mode		Supply Air
Volume flow	m <sup>3</sup> /h	1100 / 305
Inlet temp. (after heat recovery)	°C	16
Outlet temp. (downstr. Of heater)	°C	20
Heating capacity	kW	1.52

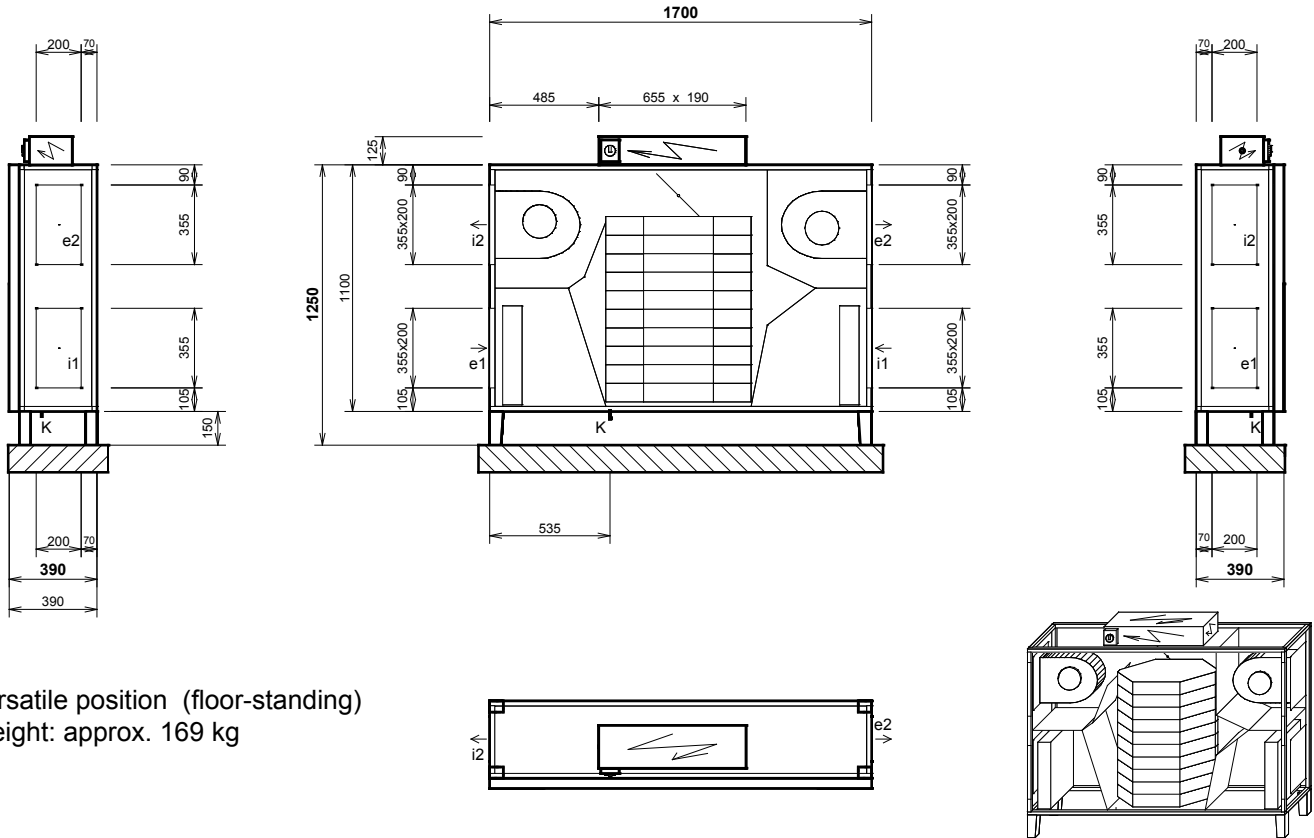
Design data for condensing AHU		Supply Air
Air volume @200Pa	m <sup>3</sup> /hr / l/sec	1100 / 305
Refrigerant type		R32
Condensing temperature	°C	40
Outdoor temperature	°C	-5
Heating capacity	kW	1.52
Required min. outdoor temperature	°C	-5

### Accessories (part of delivery)

- A expansion valve 3)
  - B nozzle 3)
  - C magnetic valve 3)
  - E coil 3)
  - F sight glass 3)
  - G drier 3)
- 3 – not part of delivery



# DIMENSIONS



Versatile position (floor-standing)  
Weight: approx. 169 kg

Connections	Type	Dimensions	Optional components
e1	e1- outdoor air (ODA)	355 x 200 mm	4 x M6 thread for 20 mm flange
e2	e2- supply air (SUP)	355 x 200 mm	4 x M6 thread for 20 mm flange
i1	i1- extract air (ETA)	355 x 200 mm	4 x M6 thread for 20 mm flange
i2	i2- exhaust air (EHA)	355 x 200 mm	4 x M6 thread for 20 mm flange
K	condensate drain	Ø 32 mm / 40 mm	

Notice:  
- Door – 2 parts  
- Diagram is intended only for basic information, binding dimensions receive at device delivery, or on request from the manufacturer.

Call: 01494 525252

Visit: [airflow.com](http://airflow.com)



**Airflow Developments Limited**  
Aidelle House, Lancaster Road,  
Cressex Business Park,  
High Wycombe, Buckinghamshire,  
United Kingdom, HP12 3QP

E-mail: [info@airflow.com](mailto:info@airflow.com)  
Telephone: +44 (0) 1494 525252

[airflow.com](http://airflow.com)

© Airflow Developments Limited. Airflow Developments Limited reserve the right, in the interests of continuous development, to alter specifications without prior notice. All orders are accepted subject to our conditions of sale which are available on request



80001337 – Issue 1 03/23